

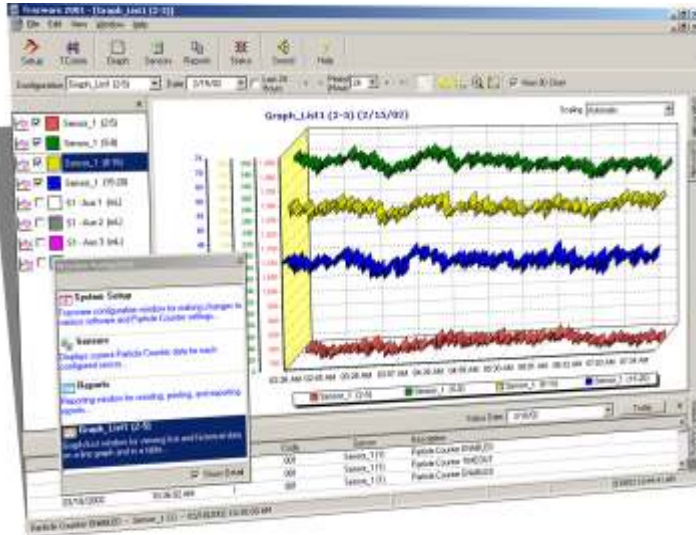
Tracware 2001 - Particle Counting Software

DESCRIPTION

Tracware 2001 belongs to a set of software utilities designed to be used with Chemtrac's PC 2400 D Particle Counters. It offers data collection and monitoring capabilities in a user-friendly graphical interface. Tracware includes real-time and historical data retrieval, as well as an alarm screen, a configuration utility, and a communication utility. Reporting features have been designed for quick access, while still having the capability to customize individual report setups. Tracware 2001 was designed to allow for easy retrieval of historical information such as particle count data, auxiliary inputs, status information, and alarm events. Tracware is part of a suite of software packages (DDE Server, an OPC Server, and a Serial Communication Protocol Utility).

STANDARD FEATURES

- › **Chart/Lists** – Up to eight chart/lists, with eight tags per graphs, can be displayed at one time in main window.
- › **Sensor Screen** – Use the sensor screen to view current particle counts, flow, cell, noise, alarms, and auxiliary inputs for each configured sensor.
- › **Reporting** – The reporting screen allows the user to easily configure and report on any set of particle count data. The user can select historical date/time in a configured report, then view a preview of the report on the screen. The user can also define reporting parameters to eliminate or include data, and also add calculation totals to the report.
- › **Status Pane** - The status view is located on the bottom of the main window. This view displays system information as well as communication information. If a particle counter fails to communicate or a data file does not exist for a particular date, a status message will appear in this view. A date field allows the user to retrieve a previous days status. This window can be hidden from the main screen.
- › **Alarm Pane** – A separate tab located on the bottom of the screen will show any alarm events. These alarm events represent conditions that took place as a result of the current alarm setup. An acknowledge button allows the user to clear all unacknowledged alarms. A date field has been included for retrieving a previous days alarms.
- › **Navigation Window** – The navigation window gives the user the ability to easily pull up any program screen. This feature is useful if multiple windows are being displayed on top of each other.
- › **Configuration** – The setup window allows the operator to easily configure system settings, sizes, alarms, graphs, and removal calculations.
- › **TracComm** – Communication utility allows for setting addresses, verifying communication, and scanning for sensors. Polling the displayed sensor will show current count data, auxiliary inputs, and various particle counter settings.



WATER QUALITY MONITORING

6991 Peachtree Industrial
Boulevard, Building 600
Norcross, GA 30092
USA

PH: 770.449.6233
US: 800.442.8722
FX: 770.447.0889

WWW.CHEMTRAC.COM

