

# Condensate Monitor PM2500XRD



## BENEFITS

- **Ensure Condensate Purity**
- **Prevent Boiler Tube Deposits**
- **Reduce Condensate Waste**
- **Improve Boiler Reliability**
- **Improve System Efficiency**

## FEATURES

- **Continuous Monitoring**
- **Low ppb Sensitivity**
- **Multi-Sensor Integration**
- **Digital LCD Interface**
- **4-20mA & Digital I/O's**
- **Simple Maintenance**

## DESCRIPTION

The Condensate Monitor is a sensitive, reliable, and low-maintenance device that alerts operators to the presence of process contaminants, allowing corrective action to be taken before the feedwater / condensate enters the boiler. The PM2500XRD is sensitive to low ppb concentrations of contaminants such as iron and can be utilized to control condensate waste.

## MEASUREMENT PRINCIPLE

The Condensate Monitor, Model PM2500XRD, uses a unique measurement of "Dynamic Light Fluctuation" which can detect low parts per billion of particulate down to the colloidal size range of 1 micron. The system provides an indication of solids that has historically been measured by millipore test. The on-line, flow through sensor eliminates sampling/testing variances encountered in manual millipore analyses and provides continuous monitoring. Sensors can be multiplexed to provide complete, real-time monitoring of individual condensate streams or any other component of the boiler system.

**Boiler Operations / Condensate**

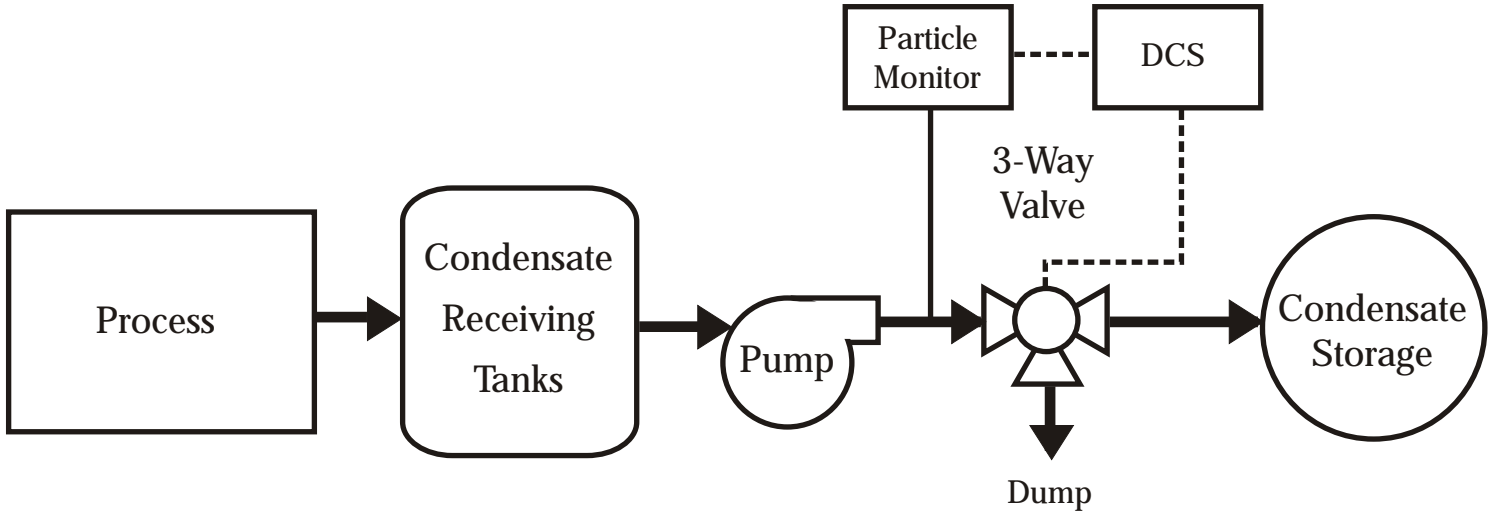
6991 Peachtree Industrial  
Boulevard, Building 600  
Norcross, GA 30092  
USA

PH: 770.449.6233  
US: 800.442.8722  
FX: 770.447.0889

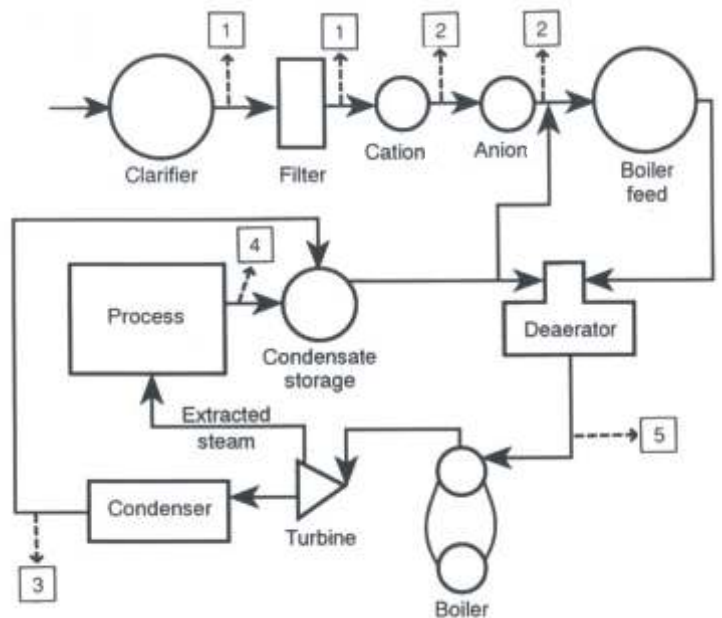
# GENERAL SPECIFICATIONS

<b>Power</b>	110 VAC, 60 Hz (standard) 220 VAC, 50 Hz (standard)	<b>Sample Cell</b>	1/8" I.D., 3/16" O.D.
<b>Sample Cell Type</b>	Flow Through	<b>Particle Size Range</b>	1 micron and above
<b>Materials Contacting Sample</b>	Tygon / Teflon / Glass	<b>Fouling Index</b>	0-9,999 FI
<b>Enclosure type</b>	Nema 4X, Polycarbonate wall mount	<b>Signal Output</b>	4-20mA proportional to reading
<b>Module Size</b>	11.25" W, 8.5" H, 5.5" D	<b>Self Diagnostics</b>	4-20mA proportional to cleanliness
<b>Weight</b>	7.5 lbs.	<b>Sample Flow Rate</b>	100mL/Min
<b>Operating Temperature</b>	32 degrees F to 120 degrees F	<b>Sensor Response Time</b>	< 2 Seconds

## TYPICAL INSTALLATION



1. Filter Influent/Effluent (Colloid Breakthrough).
2. Cation/Anion Effluent (Resin Leakage).
3. Surface Condenser (Leaks).
4. Process Condensate (Iron/Particulate).
5. Boiler Feedwater (Contaminants).



### OTHER APPLICATIONS:

- DRINKING WATER**
- FOOD & BEVERAGE**
- MF / UF INTEGRITY**
- RO / NF PRETREATMENT**

Chemtrac Systems, Inc.  
Represented By